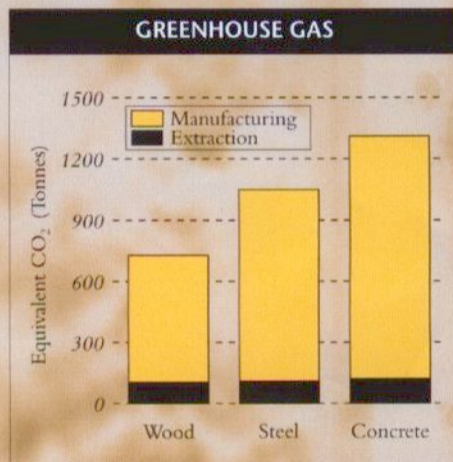
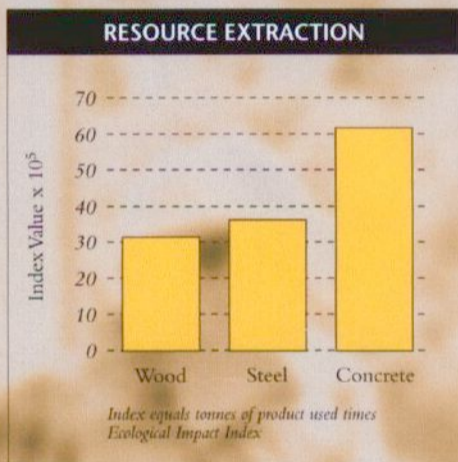
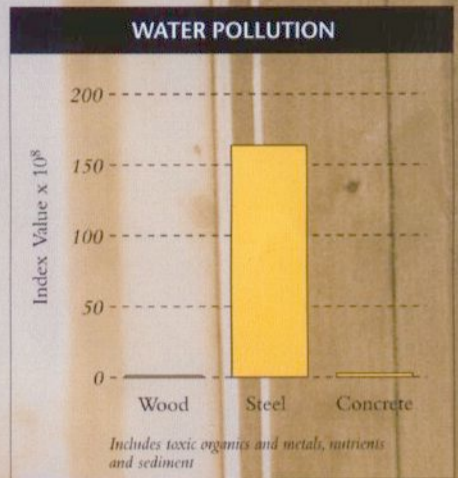
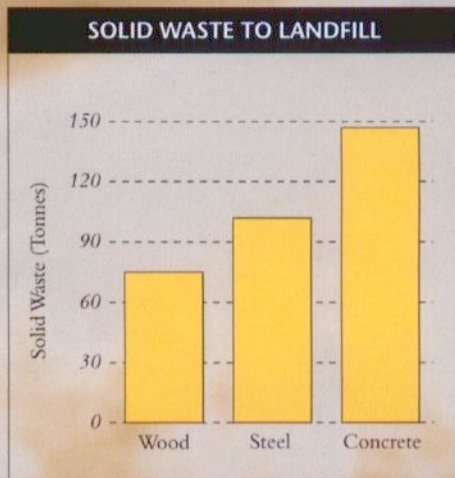
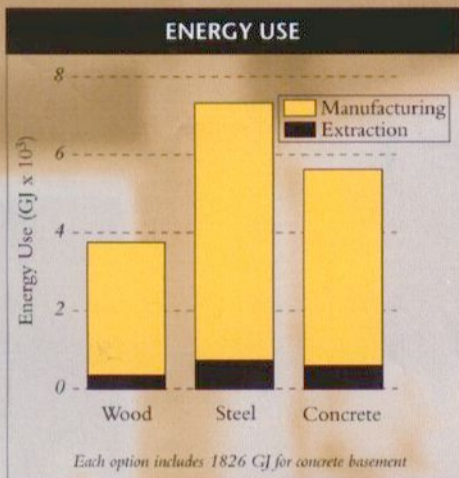


# WOOD

## ENVIRONMENTAL FACTS

A comparison of a 4620 m<sup>2</sup> (50,000 ft<sup>2</sup>)  
three storey office building designed  
using wood, steel or concrete.

Source: The ATHENA™ Project



### CONCLUSION:

Want to be environmentally friendly?

Build with **wood!**

Canadian  
Wood  
Council

Conseil  
canadien  
du bois



1400 Blair Place, Suite 210  
Ottawa, Ontario K1J 9B8  
Tel: 1-800-463-5091

Printed in Canada

